

Mesplil 1 RMBS LTD. INVESTOR REPORT

From: EBS Limited
 Month Ending: 30 November 2015
 Interest Payments Date: 22 December 2015

Investor Contacts			
Mark Whelan	Senior Manager EBS Limited	00353 1 641 7164	mark.whelan@mail.ebs.ie
Jonathan Lynch	Collateral Management Specialist, EBS Limited	00353 1 641 7195	jonathan.lynch@mail.ebs.ie

Details of Notes Issued					
Class of Notes	Original Rating Fitch/DBRS	Reference	Original Tranche Balance (Euro)	Interest Rate	Final Maturity
A1 Notes	AA/AA	XS0562903038	150,100,000.00	2.50%	Aug-55
A2 Notes	AA/AA	XS0562903202	300,000,000.00	2.00%	Aug-55
A3 Notes	AA/AA	XS0562903467	300,000,000.00	1.75%	Aug-55

Deal Information	
Issue Date	21 December 2010
First Distribution Date	22 February 2011
Minimum Denominations	€100,000
Payments Frequency	Monthly
Interest Calculation	Actual / 360

This Report	
Interest Period Start Date	23 November 2015
Interest Period End Date	22 December 2015
No of days in Interest Period	29
Next Payments Date	22 January 2016

Principal Payments on Notes									
Class of Notes	Original Balance (Euro)	% of Bonds	Opening Balance (Euro)	% of Bonds	Amortisation (Euro)	Closing Balance (Euro)	% of Bonds	Opening Pool Factor	Closing Pool Factor
A1 Notes	150,100,000	20.01%	0.00	0.00%	0.00	0.00	0.00%	0.0000	0.0000
A2 Notes	300,000,000	39.99%	234,056,493.66	43.83%	(5,052,171.52)	229,004,322.14	43.29%	0.7802	0.7633
A3 Notes	300,000,000	39.99%	300,000,000.00	56.17%	0.00	300,000,000.00	56.71%	1.0000	1.0000
Total	750,100,000	100%	534,056,493.66	100%	(5,052,171.52)	529,004,322.14	100%	0.7120	0.7052

Interest Payments on Notes							
Class of Notes	Reference	Interest Rate	Number of Days	Interest Due (Euro)	Interest Paid (Euro)	Unpaid Interest	Cumulative Unpaid
A1 Notes	XS0562903038	2.50%	29	0.00	0.00	0	0
A2 Notes	XS0562903202	2.00%	29	377,100.00	377,100.00	0	0
A3 Notes	XS0562903467	1.75%	29	422,910.00	422,910.00	0	0

Credit Enhancement and Liquidity Facilities									
Description	Provider	Balance at close of transaction (Euro)	Balance at start of Month (Euro)	Drawings in Month (Euro)	Replenished/ (Released) in Month (Euro)	Balance at Close of Month (Euro)	Balance Required (Euro)	Deficit (Euro)	
Class Z Loan	EBS	250,000,000.00	250,000,000.00	0.00	0.00	250,000,000.00	250,000,000.00	0.00	
Reserve Fund (Note 1(a))	EBS	10,001,000.00	10,001,000.00	0.00	0.00	10,001,000.00	10,001,000.00	0.00	

Mortgage Insurance Receipts	
MIG settlement #1	135,735.00
MIG settlement #2	149,772.53
MIG settlement #3	163,995.94
MIG settlement #4	133,563.00
MIG settlement #5	602,980.00
Less MIG funds on loans sold back to issuer	(20,803.23)
Less applied funds	(159,668.47)
Net Total	1,005,574.77

Monies received from an agreed settlement of mortgage indemnity insurance. These monies reside in the reserve account and will only be applied upon sale of a property that was covered under the settlement.

Revenue Analysis		Euro
Revenue Receipts (excluding recovery of losses and any excluded items)		2,016,390.22
Principal Receipts on True Loss & Deemed Loss Loans		515,088.54
Interest on Bank Accounts		0.00
Other Net Income		0.00
Received from EBS/Haven for repurchase of Loans		0.00
Principal received from repurchased Deemed & Actual Losses		0.00
Plus Payments of Monies Belonging to Third Parties		0.00
Plus Available Principle Receipts to Cover any Revenue Deficiency		0.00
Mortgage Insurance Receipts Allocated		887.39
Available Revenue Funds		2,532,366.15

*Excluding General Reserve available in the event that Revenue Funds are less than the aggregate of (a) to (e).

Allocation of Available Funds		Euro
Trustee Fees		0.00
Paying Agent, Corporate Servicer, Account Bank + Other 3rd Party Prior Payments		(1,460.24)
Servicer + Cash Manager Fees & Backup Servicer + Backup Cash Manager Fees		(85,527.21)
Class A Notes Interest		(800,010.00)
Class A Principal Deficiency Ledgers		0.00
Class Z Principal Deficiency Sub-Ledger (Class A notes outstanding)		(1,645,368.70)
Class Z Loan Interest		0.00
Issuers Profit		0.00
Subordinated Loan Interest		0.00
Subordinated Loan Redemption Amount		0.00
Deferred Consideration		0.00
Total Allocation		(2,532,366.15)
Excess Retained		0.00

Principal Deficiency Ledger								Cumulative	
Class of Note	Opening Balance	Deemed Losses Allocated this Period*	Actual Losses Allocated this Period	Compromise Settlement Losses Allocated this Period	Total Losses Allocated this Period	Total Credited this Period	Closing Balance	Cumulative Losses / Revenue Deficiency Allocated	Cumulative Losses / Revenue Deficiency Paid
A2 Notes	0.00	0.00	0.00	0.00	0.00	0.00	0.00	0.00	
A3 Notes	0.00	0.00	0.00	0.00	0.00	0.00	0.00	0.00	
Class Z Loan Note	49,490,294.84	743,390.51	0.00	0.00	743,390.51	1,645,368.70	48,588,316.65	120,927,392.85	72,339,076.19

Class of Note	Principal Recovered from Mortgage Loans	
	This Period	Cumulative
	A1 Notes	0
A2 Notes	0	0
A3 Notes	0	0
Class Z Loan Note	515,088.54	8,740,125.79

*Deemed Loss means in respect of a Mortgage Loan (without double counting): (i) the principal balance outstanding of such Mortgage Loan where the ratio between amounts due and unpaid by the scheduled interest and principal instalments for such Mortgage Loan exceeds an amount equal to the aggregate of 12 months of scheduled interest and principal instalments for such loan; (ii) if enforcement proceedings are completed, the principal balance of such Mortgage Loan prior to the application of realisation proceeds; and (iii) any principal loss arising as a result of the exercise of set-off by a Mortgage Borrower against the Seller in respect of any Mortgage Loan which has not been repurchased by the Seller.

Available Principal Funds		EUR
Principal Receipts Received		3,921,891.36
Principal Receipts on True Loss & Deemed Loss Loans Released from Retained Principal Receipts Ledger		(515,088.54)
Received from EBS/Haven for repurchase of Loans		0.00
Any Credit to Class A + Z Principal Deficiency Sub-Ledger		1,645,368.70
Less Amount to pay a Revenue Deficiency		0.00
Total Principal Funds		5,052,171.52

Allocation of Principle Receipts		EUR
During Revolving Period Principal due on New Portfolios		0.00
Prior to 1st Optional Redemption date Principal due on Further Advances		0.00
During Revolving Period Retained Principal Receipts		0.00
Principal Class A1 Notes		0.00
Principal Class A2 Notes		(5,052,171.52)
Principal Class A3 Notes		0.00
Principal Class Z Loan		0.00
Excess as Available Revenue Receipts		0.00
Total Allocation of Principle Receipts		(5,052,171.52)

Mortgage Portfolio Analysis: Properties Under Management					
Description	This Period		Cumulative (Active Loans only)		Cumulative Active and Redeemed Loans
	No of Properties	Principal Balance Amount	No of Properties	Principal Balance Amount	Number of Properties
Property in Possession	4	739,402.56	31	6,809,332.45	54
Abandoned	0	0.00	12	2,683,298.70	17
Sold	0	0.00	31	3,848,868.80	40

Note: From July 2011 IPD onwards the 'properties under management' data is being reported on a property basis as opposed to an individual loan basis.
Note: From August 2014 IPD onwards the Voluntary Handback and Repossession data has been amalgamated under the Property in Possession heading.

Mortgage Portfolio Analysis		
	At end of Month (Euro)	Cumulative (Euro)
Opening Mortgage Principle Balance	846,479,510.90	1,000,135,308.07
Loan Purchase during Revolving Period	0.00	10,476,667.73
Compromise Settlements	(470,276.14)	(5,759,877.75)
Scheduled Principal Payments and Early Redemptions	(3,921,891.36)	(157,620,131.25)
Capitalisation Arrangements	64,090.96	3,483,170.79
Up to Optional Redemption date Further Advances	0.00	0.00
Principal Repurchase*	0.00	(8,563,703.23)
Closing Mortgage Principal Balance	842,151,434.36	842,151,434.36

*From March 2015 Principal Repurchase shows loans that have been removed since February 2012.
The cumulative figure for Scheduled Principal Payments and Early Redemptions has been amended to reflect this.

Mortgage Portfolio Analysis		
	Previous Month	Current Month
Weighted average interest rate	2.98%	2.97%
Annualised CPR (current month unscheduled Repayments annualised)	1.29%	1.43%
Annualised CPR (current month Scheduled & Unscheduled Repayments annualised)	3.00%	3.33%

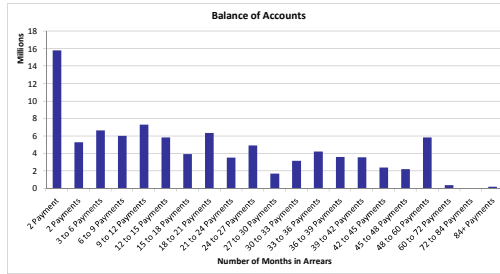
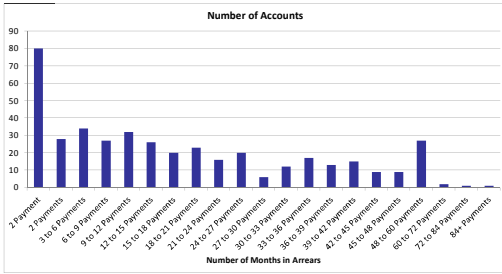
Deal Participation Information				
	Provider	Minimum Rating	Current Rating	Rating Satisfied
Bank Account Provider	BNP Paribas	Fitch F1	Fitch F1	Yes
Servicer	EBS Limited	Fitch BBB-	Fitch BBB-	Yes
Backup Servicer	Crown Mortgage Management	-	RPS3 / -	n/a
Cash Manager	EBS Limited	Fitch BBB-	Fitch BBB-	Yes
Back Up Cash Manager	Deutsche Bank	-	Fitch F1+/Fitch A+	n/a
Corporate Servicer	EBS Limited	-	-	n/a
Clearing Account Provider	AIB	Fitch F2 / BBB+	Fitch F2	Yes (Short-term)

Deal Participation Information	
Note Trustee	BNY Mellon Corporate Trustee Services Ltd.
Security Trustee	BNY Mellon Corporate Trustee Services Ltd.
Paying Agent	The Bank of New York Mellon
Lead Managers	J.P. Morgan Securities Ltd.
Listing	Irish Stock Exchange

Stratification Tables

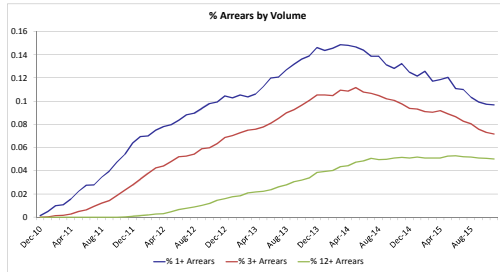
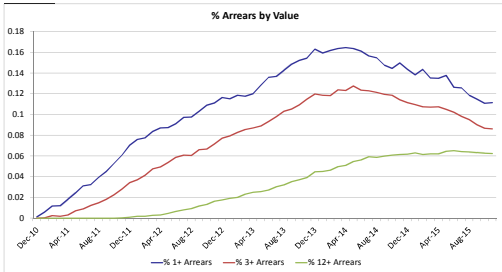
Note: The losses recognised have not yet been reflected in the following stratification tables.

Number of Repayments in Arrears				
Number of Payments Missed	Number of Accounts	% Number of Accounts	Outstanding Balance	% of Total Outstanding Balance
< 1 Payment	3,901	90.32%	741,704,685	88.85%
1 Payment	80	1.85%	15,806,846	1.89%
2 Payments	28	0.65%	5,280,142	0.63%
3 to 6 Payments	34	0.79%	6,654,744	0.80%
6 to 9 Payments	27	0.63%	6,017,435	0.72%
9 to 12 Payments	32	0.74%	7,297,192	0.87%
12 to 15 Payments	26	0.60%	5,838,328	0.70%
15 to 18 Payments	20	0.46%	3,928,345	0.47%
18 to 21 Payments	23	0.53%	6,345,303	0.76%
21 to 24 Payments	16	0.37%	3,531,045	0.42%
24 to 27 Payments	20	0.46%	4,935,724	0.59%
27 to 30 Payments	6	0.14%	1,720,435	0.21%
30 to 33 Payments	17	0.28%	3,162,804	0.38%
33 to 36 Payments	12	0.39%	4,248,442	0.51%
36 to 39 Payments	13	0.30%	3,618,337	0.43%
39 to 42 Payments	15	0.35%	3,571,947	0.43%
42 to 45 Payments	9	0.21%	2,412,581	0.29%
45 to 48 Payments	9	0.21%	2,199,420	0.26%
48 to 60 Payments	27	0.63%	5,834,759	0.70%
60 to 72 Payments	2	0.05%	397,994	0.05%
72 to 84 Payments	1	0.02%	9,968	0.00%
84+ Payments	1	0.02%	220,056	0.03%
Total	4,319	100.00%	834,738,532	100.00%



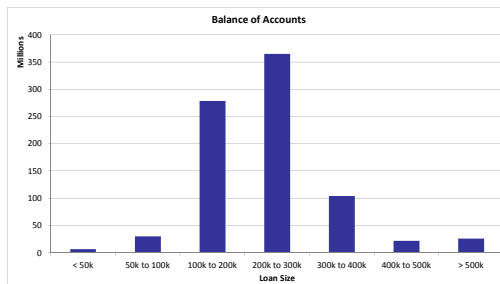
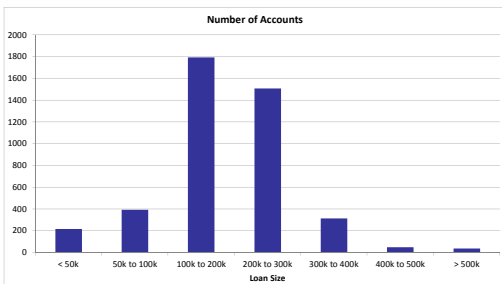
Repayments in Arrears - Last 6 Months						
Months in Arrears	Jun-15	Jul-15	Aug-15	Sep-15	Oct-15	Nov-15
Value of Accounts (€m)						
12+ Arrears	55.75	54.88	54.30	53.32	52.54	51.98
3+ Arrears**	87.60	83.60	80.77	75.93	72.92	71.95
1+ Arrears*	108.14	107.17	100.75	96.79	92.96	93.03
Total Arrears	108.14	107.17	100.75	96.79	92.96	93.03
Total Portfolio	856.12	852.29	848.57	842.92	839.07	834.74
Number of Accounts						
12+ Arrears	231	227	226	222	220	217
3+ Arrears**	378	361	351	329	316	310
1+ Arrears*	485	480	450	431	422	418
Total Arrears	485	480	450	431	422	418
Total Portfolio	4,369	4,358	4,351	4,337	4,329	4,319

* 1+ Arrears includes loans in 3+ and 12+ Arrears
 ** 3+ Arrears includes loans in 12+ Arrears

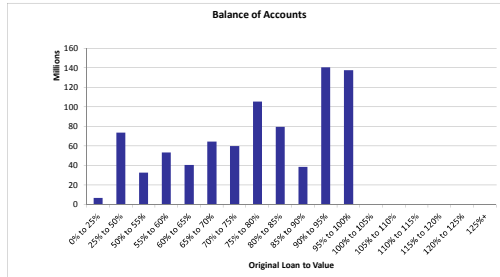
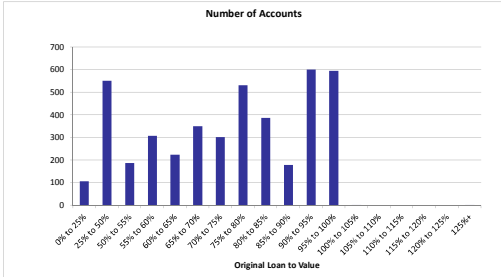


Cure Rates - Last 6 Months						
	Jun-15	Jul-15	Aug-15	Sep-15	Oct-15	Nov-15
Total Cases Any Arrears	578	574	552	526	517	496
Total Cured to 0 Arrears	83	48	70	77	69	65
% Cure Rate to 0 Arrears	14.36%	8.36%	12.68%	14.64%	13.35%	13.10%

Loan Size				
Loan Size	Number of Accounts	% Number of Accounts	Outstanding Balance	% of Total Outstanding Balance
< 50k	218	5.05%	6,913,532	0.83%
50k to 100k	395	9.15%	30,571,419	3.66%
100k to 200k	1,795	41.56%	278,787,579	33.40%
200k to 300k	1,509	34.94%	365,453,179	43.78%
300k to 400k	314	7.27%	104,448,814	12.51%
400k to 500k	50	1.16%	22,194,127	2.66%
> 500k	38	0.88%	26,369,883	3.16%
Total	4,319	100.00%	834,738,532	100.00%
Weighted Average Loan Size			193,271.25	

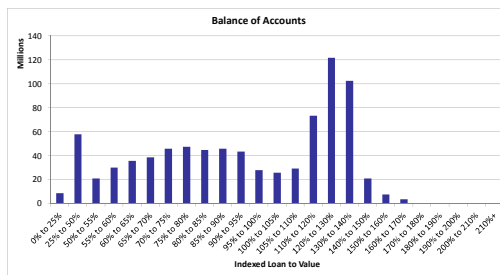
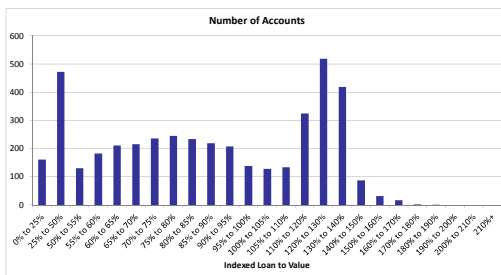


Original LTV				
Original LTV	Number of Accounts	% Number of Accounts	Outstanding Balance	% of Total Outstanding Balance
0% to 25%	106	2.45%	6,648,777	0.80%
25% to 50%	551	12.76%	73,643,292	8.82%
50% to 55%	186	4.31%	32,811,269	3.93%
55% to 60%	307	7.11%	53,473,360	6.41%
60% to 65%	224	5.19%	40,564,276	4.86%
65% to 70%	349	8.08%	64,642,148	7.74%
70% to 75%	302	6.99%	60,106,795	7.20%
75% to 80%	531	12.29%	105,656,364	12.66%
80% to 85%	387	8.96%	79,733,658	9.55%
85% to 90%	178	4.12%	38,788,456	4.65%
90% to 95%	601	13.92%	140,747,158	16.86%
95% to 100%	595	13.78%	137,760,854	16.50%
100% to 105%	1	0.02%	15,278	0.00%
105% to 110%	0	0.00%	0	0.00%
110% to 115%	0	0.00%	0	0.00%
115% to 120%	0	0.00%	0	0.00%
120% to 125%	0	0.00%	0	0.00%
125%+	1	0.02%	146,848	0.02%
Total	4,319	100.00%	834,738,532	100.00%
Weighted Average Original LTV			77.60%	

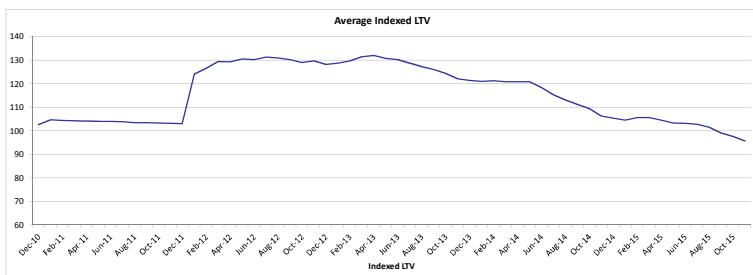


*OLTV for top-up loans is calculated by combining the original loan amount and the top-up loan amount. This does not take into account any reduction in the original loan amount that occurred prior to the top-up approval. The OLTV on top-up loans is therefore shown here as higher than the true exposure at the time the top-up was approved. The true exposure on all loans, including top-ups, was 100% or less at loan approval.

Indexed LTV				
Indexed LTV	Number of Accounts	% Number of Accounts	Outstanding Balance	% of Total Outstanding Balance
0% to 25%	161	3.73%	8,722,865	1.04%
25% to 50%	472	10.93%	57,952,776	6.94%
50% to 55%	131	3.03%	21,064,793	2.52%
55% to 60%	183	4.24%	30,228,801	3.62%
60% to 65%	211	4.89%	35,859,432	4.30%
65% to 70%	216	5.00%	38,636,478	4.63%
70% to 75%	236	5.46%	46,032,810	5.51%
75% to 80%	245	5.67%	47,445,682	5.68%
80% to 85%	234	5.42%	44,983,037	5.39%
85% to 90%	219	5.07%	45,849,124	5.49%
90% to 95%	208	4.82%	43,571,288	5.22%
95% to 100%	139	3.22%	28,028,257	3.36%
100% to 105%	128	2.96%	26,044,899	3.12%
105% to 110%	134	3.10%	29,372,807	3.52%
110% to 120%	325	7.52%	73,582,983	8.82%
120% to 130%	519	12.02%	121,800,978	14.59%
130% to 140%	419	9.70%	102,466,348	12.28%
140% to 150%	87	2.01%	21,012,369	2.52%
150% to 160%	32	0.74%	7,716,470	0.92%
160% to 170%	17	0.39%	3,806,402	0.46%
170% to 180%	2	0.05%	319,308	0.04%
180% to 190%	1	0.02%	240,429	0.03%
190% to 200%	0	0.00%	0	0.00%
200% to 210%	0	0.00%	0	0.00%
210%+	0	0.00%	0	0.00%
Total	4,319	100.00%	834,738,532	100.00%
Weighted Average Indexed LTV			95.79%	

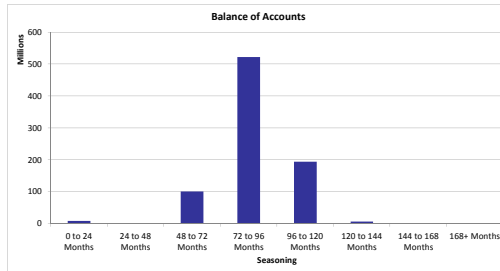
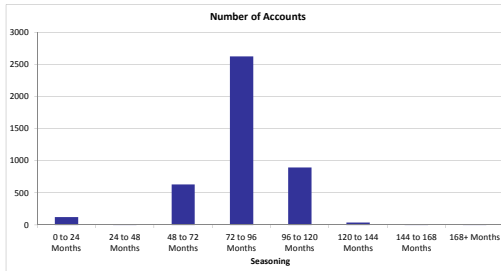


Average Indexed LTV - Last 6 Months						
Indexed LTV	Jun-15	Jul-15	Aug-15	Sep-15	Oct-15	Nov-15
Indexed LTV	103.21	102.89	101.64	99.18	97.66	95.79



In December 2011 the PTSB Index was replaced with the CSO Index

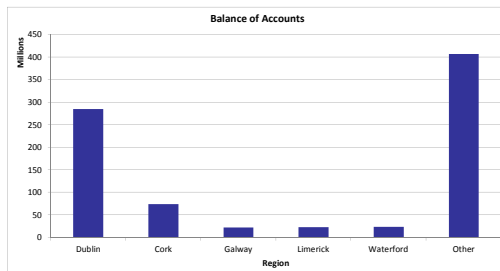
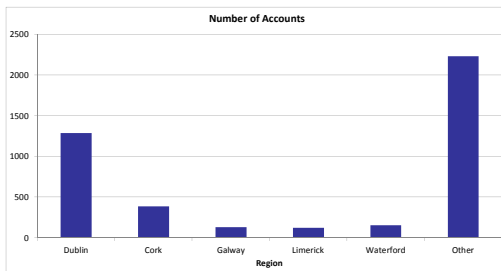
Seasoning				
Seasoning	Number of Accounts	% Number of Accounts	Outstanding Balance	% of Total Outstanding Balance
0 to 24 Months	121	2.80%	8,833,488	1.06%
24 to 48 Months	9	0.21%	908,651	0.11%
48 to 72 Months	632	14.63%	100,693,840	12.06%
72 to 96 Months	2,623	60.73%	522,419,241	62.58%
96 to 120 Months	893	20.68%	194,808,880	23.34%
120 to 144 Months	36	0.83%	6,282,375	0.75%
144 to 168 Months	4	0.09%	711,796	0.09%
168+ Months	1	0.02%	80,262	0.01%
Total	4,319	100.00%	834,738,532	100.00%
Weighted Average Seasoning			88.56	



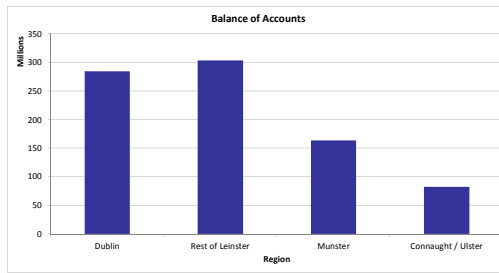
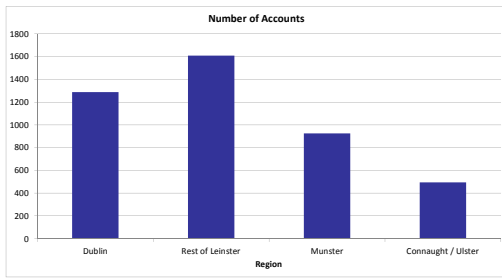
Property Area (County)				
County	Number of Accounts	% Number of Accounts	Outstanding Balance	% of Total Outstanding Balance
Carlow	68	1.57%	11,580,793	1.39%
Cavan	48	1.11%	8,473,736	1.02%
Clare	98	2.27%	16,993,094	2.04%
Cork	389	9.01%	74,337,407	8.91%
Donegal	60	1.39%	8,461,260	1.01%
Dublin	1,288	29.82%	284,947,432	34.14%
Galway	130	3.01%	22,335,930	2.68%
Kerry	58	1.34%	9,507,211	1.14%
Kildare	281	6.51%	60,043,659	7.19%
Kilkenny	114	2.64%	20,281,318	2.43%
Laois	116	2.69%	19,747,044	2.37%
Leitrim	17	0.39%	2,811,356	0.34%
Limerick	125	2.89%	22,616,942	2.71%
Longford	31	0.72%	5,428,033	0.65%
Louth	227	5.26%	40,975,297	4.91%
Mayo	81	1.88%	14,199,931	1.70%
Meath	180	4.17%	36,928,629	4.42%
Monaghan	55	1.27%	8,770,955	1.05%
Offaly	106	2.45%	17,434,659	2.09%
Roscommon	47	1.09%	7,785,639	0.93%
Sligo	57	1.32%	9,429,547	1.13%
Tipperary	102	2.36%	16,342,457	1.96%
Waterford	153	3.54%	23,782,103	2.85%
Westmeath	88	2.04%	14,561,454	1.74%
Wexford	175	4.05%	31,404,844	3.76%
Wicklow	225	5.21%	45,557,803	5.46%
Total	4,319	100.00%	834,738,532	100.00%

Property Area (County)								
County	Number of Accounts	% Number of Accounts	Outstanding Balance	% of Total Outstanding Balance	BTL			
					Number of Accounts	% Number of Accounts	Outstanding Balance	% of Total Outstanding Balance
Carlow	66	1.65%	11,363,791	1.48%	2	0.63%	217,002	0.34%
Cavan	46	1.15%	8,165,710	1.06%	2	0.63%	308,026	0.48%
Clare	94	2.33%	16,537,338	2.15%	4	1.26%	455,756	0.71%
Cork	364	9.10%	69,173,346	8.98%	25	7.89%	5,164,061	8.01%
Donegal	53	1.32%	7,646,154	0.99%	7	2.21%	815,106	1.26%
Dublin	1,166	29.14%	256,543,810	33.31%	122	38.49%	28,403,622	44.05%
Galway	120	3.00%	21,026,992	2.73%	10	3.15%	1,308,938	2.03%
Kerry	47	1.17%	7,423,392	0.96%	11	3.47%	2,083,819	3.23%
Kildare	265	6.62%	57,112,373	7.41%	16	5.05%	2,931,286	4.55%
Kilkenny	108	2.70%	18,609,794	2.42%	6	1.89%	1,671,525	2.59%
Laois	112	2.80%	19,164,536	2.49%	4	1.26%	582,507	0.90%
Leitrim	14	0.35%	2,249,026	0.29%	3	0.95%	562,330	0.87%
Limerick	115	2.87%	19,712,703	2.56%	10	3.15%	2,904,239	4.50%
Longford	29	0.72%	5,100,269	0.66%	2	0.63%	327,764	0.51%
Louth	215	5.37%	38,977,691	5.06%	12	3.79%	1,997,606	3.10%
Mayo	70	1.75%	12,337,118	1.60%	11	3.47%	1,862,814	2.89%
Meath	169	4.22%	34,693,856	4.50%	11	3.47%	2,234,773	3.47%
Monaghan	50	1.25%	7,735,253	1.00%	5	1.58%	1,035,703	1.61%
Offaly	101	2.52%	16,031,774	2.08%	5	1.58%	1,402,884	2.18%
Roscommon	43	1.07%	7,208,084	0.94%	4	1.26%	577,555	0.90%
Sligo	54	1.35%	8,841,662	1.15%	3	0.95%	387,885	0.91%
Tipperary	96	2.40%	15,525,905	2.02%	6	1.89%	816,952	1.27%
Waterford	142	3.55%	22,050,414	2.86%	11	3.47%	1,731,690	2.69%
Westmeath	84	2.10%	13,875,630	1.80%	4	1.26%	685,823	1.06%
Wexford	164	4.10%	29,908,782	3.88%	11	3.47%	1,496,062	2.32%
Wicklow	215	5.37%	43,240,756	5.61%	10	3.15%	2,317,047	3.59%
Total	4,002	100%	770,255,758	100%	317	100%	64,482,774	100%

Property Area (County)				
Major County	Number of Accounts	% Number of Accounts	Outstanding Balance	% of Total Outstanding Balance
Dublin	1,288	29.82%	284,947,432	34.14%
Cork	389	9.01%	74,337,407	8.91%
Galway	130	3.01%	22,335,930	2.68%
Limerick	125	2.89%	22,616,942	2.71%
Waterford	153	3.54%	23,782,103	2.85%
Other	2,234	51.72%	406,718,718	48.72%
Total	4,319	100.00%	834,738,532	100.00%



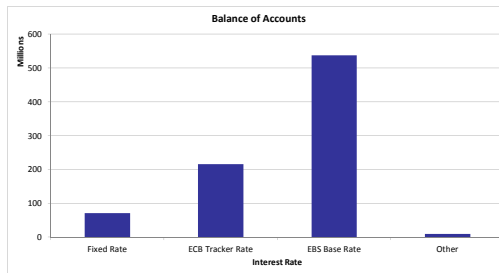
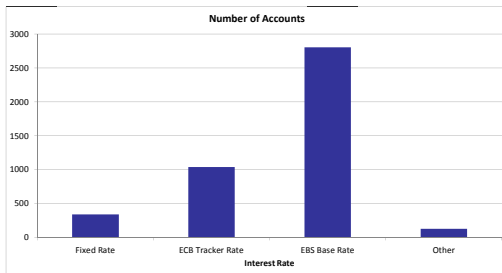
Property Area (Region)				
Region	Number of Accounts	% Number of Accounts	Outstanding Balance	% of Total Outstanding Balance
Dublin	1,288	29.82%	284,947,432	34.14%
Rest of Leinster	1,611	37.30%	303,943,532	36.41%
Munster	925	21.42%	163,579,214	19.60%
Connaught / Ulster	495	11.46%	82,268,354	9.86%
Total	4,319	100.00%	834,738,532	100.00%



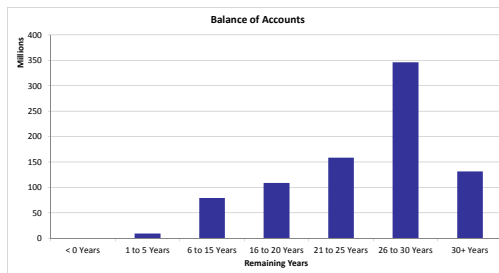
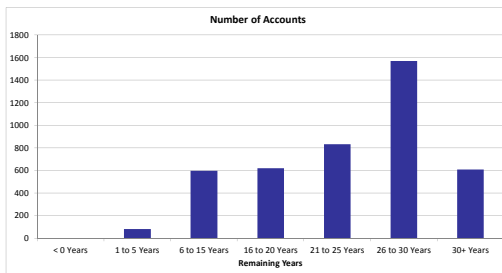
Interest Rate				
Interest Rate Type	Number of Accounts	% Number of Accounts	Outstanding Balance	% of Total Outstanding Balance
Fixed Rate	340	7.87%	71,322,196	8.54%
ECB Tracker Rate	1,041	24.10%	216,093,444	25.89%
EBS Base Rate	2,808	65.02%	537,580,754	64.40%
Other***	130	3.01%	9,742,139	1.17%
Total	4,319	100.00%	834,738,532	100.00%

Interest Rate Type	Number of Accounts	Avg Interest Rate %
Fixed Rate	340	3.49
ECB Tracker Rate	1,041	1.13
EBS Base Rate	2,808	3.70
Other***	130	0.00

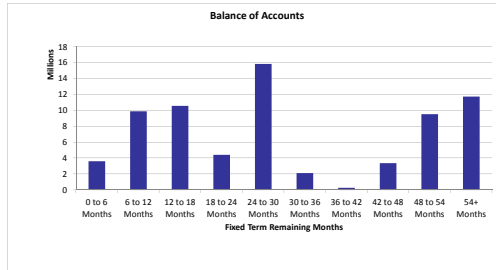
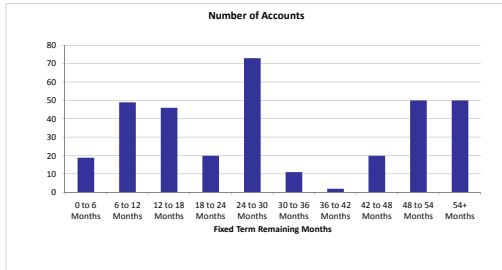
*** Other refers to loans on zero interest rate. These loans are subject to this interest rate in accordance with the EBS Mortgage Arrears Resolution Strategy as it applies to "Split Loans". The entire mortgage debt of the non interest bearing portion of a "Split Loan" is recorded against the Principal Deficiency Ledger.



Remaining Years				
Remaining Years	Number of Accounts	% Number of Accounts	Outstanding Balance	% of Total Outstanding Balance
< 0 Years	1	0.02%	17,419	0.00%
1 to 5 Years	83	1.92%	9,325,425	1.12%
6 to 15 Years	600	13.89%	79,239,952	9.49%
16 to 20 Years	620	14.36%	108,810,587	13.04%
21 to 25 Years	833	19.29%	158,905,072	19.04%
26 to 30 Years	1,571	36.37%	346,435,469	41.50%
30+ Years	611	14.15%	132,004,608	15.81%
Total	4,319	100.00%	834,738,532	100.00%
Weighted Average Remaining Years			24.60	

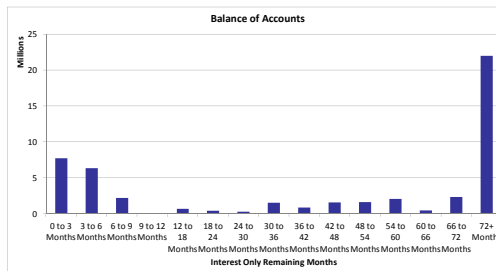
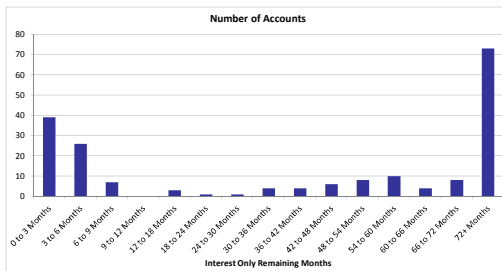


Fixed Term Remaining Months				
Fixed Term Remaining Months	Number of Accounts	% Number of Accounts	Outstanding Balance	% of Total Outstanding Balance
0 to 6 Months	19	5.59%	3,602,022	5.05%
6 to 12 Months	49	14.41%	9,883,840	13.86%
12 to 18 Months	46	13.53%	10,554,721	14.80%
18 to 24 Months	20	5.88%	4,418,601	6.20%
24 to 30 Months	73	21.47%	15,839,428	22.21%
30 to 36 Months	11	3.24%	2,125,188	2.98%
36 to 42 Months	2	0.59%	269,234	0.38%
42 to 48 Months	20	5.88%	3,367,984	4.72%
48 to 54 Months	50	14.71%	9,519,094	13.35%
54+ Months	50	14.71%	11,742,084	16.46%
Total	340	100.00%	71,322,196	100.00%
Weighted Fixed Term Remaining Months			31.17	



Principal Repayments Holiday Status				
Principal Repayments Holiday Status	Number of Accounts	% Number of Accounts	Outstanding Balance	% of Total Outstanding Balance
Y	194	4.49%	50,193,968	6.01%
N	4,125	95.51%	784,544,564	93.99%
Total	4,319	100.00%	834,738,532	100.00%

Principal Repayments Holiday Remaining Term				
Principal Repayments Holiday Remaining Term	Number of Accounts	% Number of Accounts	Outstanding Balance	% of Total Outstanding Balance
0 to 3 Months	39	20.10%	7,723,244	15.39%
3 to 6 Months	26	13.40%	6,342,972	12.64%
6 to 9 Months	7	3.61%	2,222,989	4.43%
9 to 12 Months	0	0.00%	0	0.00%
12 to 18 Months	3	1.55%	666,499	1.33%
18 to 24 Months	1	0.52%	407,036	0.81%
24 to 30 Months	1	0.52%	282,749	0.56%
30 to 36 Months	4	2.06%	1,544,861	3.08%
36 to 42 Months	4	2.06%	851,086	1.70%
42 to 48 Months	6	3.09%	1,590,909	3.17%
48 to 54 Months	8	4.12%	1,626,516	3.24%
54 to 60 Months	10	5.15%	2,086,118	4.16%
60 to 66 Months	4	2.06%	483,054	0.96%
66 to 72 Months	8	4.12%	2,341,557	4.67%
72+ Months	73	37.63%	22,024,379	43.88%
Total	194	100.00%	50,193,968	100.00%
Weighted Principal Repayments Holiday Remaining Term			89.19	



Occupancy Status				
Occupancy Status	Number of Accounts	% Number of Accounts	Outstanding Balance	% of Total Outstanding Balance
Home loan	4,002	92.66%	770,255,758	92.28%
Retail BTL	317	7.34%	64,462,774	7.72%
Commercial BTL	0	0.00%	0	0.00%
Commercial	0	0.00%	0	0.00%
Total	4,319	100.00%	834,738,532	100.00%

NOTES:

1. LIQUIDITY AND CREDIT SUPPORT

- (a) Reserve Fund (1% of the principal outstanding of the Notes on the Closing Date)
- (b) Available Revenue Receipts
- (c) Subordination of the Class Z Loan

2. PRIORITY OF Payments

Revenue and principal Payments on Mespil follow through separate Payments waterfalls.

(a) Revenue funds flow to noteholders according to the following pre-acceleration priority of Payments:

- 1. Satisfaction of Note & Security Trustee fees and expenses
- 2. Satisfaction of certain senior fees and expenses (Agent Bank, Corp. Services Provider + Account Bank etc.) and other 3rd Party fees
- 3. Satisfaction of Servicer + Cash Manager fees
- 4. Pay Interest due on Class A1, A2 & A3 Notes
- 5. Credit Class A1, A2 & A3 Principal Deficiency Ledger to eliminate any debit thereon
- 6. Credit General Reserve Ledger to required amount
- 7. Credit Class Z Principal Deficiency Sub-Ledger (if Class A notes outstanding) to clear the debt thereon
- 8. Pay Interest due on Class Z Loan
- 9. Credit Class Z Principal Deficiency Sub-Ledger (Class A notes redeemed) to clear the debt thereon
- 10. Pay Issuers Profit of €75
- 11. Pay Interest due on Subordinated Loans
- 12. Pay Subordinated Loan Redemption Amounts
- 13. Pay Deferred Consideration due to Sellers
- 14. Excess (if any) back to Issuer

(b) Pre-Acceleration Payments of Principal

Principal Payments must be applied sequentially in the following order of priority:

- 1. During Revolving Period - Satisfaction of principal due to each Seller for New Portfolios
- 2. Prior to 1st Optional Redemption date - Satisfaction of principal due to each Seller for Further Advances
- 3. During Revolving Period - Deposit of all remaining principal receipts into Reserve Account
- 4. Payments of Principal on Class A1 Notes
- 5. Payments of Principal on Class A2 Notes
- 6. Payments of Principal on Class A3 Notes
- 7. Payments of Principal on Class Z Loan
- 8. Excess (if any) applied as Available Revenue Receipts

3. REVOLVING PERIOD + SALE DATES

On each Sale Date, during the period from the Closing Date until the earlier to occur of (a) the Revolving Period Termination Date; and (b) the Calculation Date occurring in February 2012, being the thirteenth Interest Payments Date occurring after the Closing Date (the "Revolving Period"), each Seller may offer to sell New Loans to the Issuer subject to the satisfaction of the relevant Asset Conditions. On each Sale Date, each Seller may offer to sell and the Issuer may agree to purchase further advances made by such Seller to a Borrower which are secured by a mortgage on the same Property as a Loan advanced by such Seller (a "Further Advance") subject to the satisfaction of the relevant Asset Conditions. The Issuer will use Principal Receipts and amounts standing to the credit of the Retained Principal Receipts Ledger towards the purchase of New Loans and Further Advances from each Seller, if offered for sale.

4. Asset Conditions

(I) New Loan Asset Conditions

- (a) no Event of Default is continuing;
- (b) as at the relevant Monthly Test Date, the ratio of (A) divided by (B) is less than [3] per cent., where (A) is the Current Balance of the Loans comprising the Portfolio, in respect of which (i) the aggregate amount in Arrears is more than three times the Monthly Payments then due, and (ii) Loan was subject to an Interest Capitalisation unless such Loan has been current for 12 consecutive months up to the relevant Monthly Test date, and (B) is the aggregate Current Balance of the Loans comprising the Portfolio at that date;
- (c) as at the relevant Monthly Test Date, the General Reserve Fund is at the General Reserve Fund Required Amount;
- (d) the yield on the New Loan is greater than 2.50 per cent. per annum and subject to all applicable laws, rules and guidelines relating to the Mortgages and to EBS and Haven;
- (e) the relevant Seller has delivered, on the relevant Sale Date, a Solvency Certificate signed by an Authorised Signatory of the Seller in accordance with the terms of the relevant Mortgage Sale Agreement;
- (f) the aggregate Current Balance of New Loans sold to the Issuer does not exceed €100,000,000;
- (g) as at the relevant Monthly Test Date, the percentage of loans to First Time Buyers is not more than 2 per cent above the percentage of loans to First Time Buyers as at the Closing Date;
- (h) no New Loan will contain an interest-only part
- (i) no New Loan has been in arrears (other than Technical Arrears, as defined below)
- (j) the Original LTV ratio is equal or less than 90 per cent.
- (k) the Current LTV ratio is equal or less than 90 per cent.
- (l) the Current Balance is equal or less than €750,000
- (m) the original term of the loan is equal or less than 40years
- (n) the aggregate Current Balance of Buy-to-Let New Loans and Further Advances sold to the Issuer during the Revolving Period does not exceed €10,000,000;
- (o) the weighted average Original LTV of the Loans comprising the Portfolio (including the New Loan) is not more than the weighted average Original LTV of the Loans in the Portfolio as at the Closing Date;
"Technical Arrears" - arrear instances due to the following technical cases:
 - Cases where the loan went into arrears immediately after the first Payments due to a non-credit related reason associated to an incorrect completion of the Direct Debit mandate form , incorrect set of the Direct Debit itself or late set up of the Direct Debit.
 - Cases where the loan went into arrears during the life of the loan due to a non-credit related reason associated to a change of Direct Debit instructions (i.e. if a borrower changed banks and therefore needed to change the DD instruction).
 - Cases where a minor arrears occurred at some stage in the loan's lifetime for no more than 2 consecutive months and such arrears level was less than [15]% of the scheduled Payments".

"Current LTV" - principal balance outstanding of the Loan (for the avoidance of doubt, including any Further Advances secured by the same property) divided by the latest physical valuation of the property.

"Original LTV" - original principal loan amount divided by the appraised valuation of the property (for the avoidance of doubt, if the Original LTV refers to a Further Advance, the original principal loan amount will contemplate the outstanding balance of all Loans secured by the property including the appraised amount of the Further Advance).

(II) Further Advance Asset Conditions

- (a) no Event of Default is continuing;
- (b) as at the relevant Monthly Test Date, the ratio of (A) divided by (B) is less than 5 per cent, where (A) is the Current Balance of the Loans comprising the Portfolio, in respect of which (i) the aggregate amount in Arrears is more than three times the Monthly Payments then due, and (ii) Loan was subject to an Interest Capitalisation unless such Loan has been current for 12 consecutive months up to the relevant Monthly Test date, and (B) is the aggregate Current Balance of the Loans comprising the Portfolio at that date;
- (c) as at the relevant Monthly Test Date, the General Reserve Fund is at the General Reserve Fund Required Amount;
- (d) the Cash Manager is not aware that the then current ratings of the Notes then outstanding would be downgraded, withdrawn or qualified as a result of the relevant Further Advances forming part of the Portfolio;
- (e) each Further Advance complies with the Loan Warranties at its relevant Sale Date;
- (f) the yield on the Further Advance is greater than 2.50 per cent. per annum and subject to all applicable laws, rules and guidelines relating to the Mortgages and to EBS and Haven;
- (g) the Principal Deficiency Ledger does not have a debit balance as at the immediately preceding Interest Payments Date after applying all Available Revenue Receipts on that Interest Payments Date;
- (h) the aggregate amount of all Further Advances (including the Further Advances made since the Closing Date) does not exceed ten per cent. of the Current Balance of the Loans comprised in the Portfolio on the Closing Date;
- (i) the relevant Seller has delivered, on the relevant Sale Date, a Solvency Certificate signed by an Authorised Signatory of the Seller in accordance with the terms of the relevant Mortgage Sale Agreement;
- (j) the Original LTV ratio is equal or less than 90 per cent.
- (k) the Current LTV ratio is equal or less than 90 per cent.
- (l) the Current Balance of the relevant loan and the Further Advance is equal or less than €750,000
- (m) the original term of the Further Advance is equal or less than 40 years
- (n) the weighted average Original LTV of the Loans comprising the Portfolio (including the Further Advance) is not more than the weighted average Original LTV of the Loans in the Portfolio as at the Closing Date;

(III) Product Switch Asset Conditions

(a) no Event of Default is continuing;

(b) as at the relevant Monthly Test Date, the ratio of (A) divided by (B) is less than 5 per cent, where (A) is the Current Balance of the Loans comprising the Portfolio, in respect of which (i) the aggregate amount in Arrears is more than three times the Monthly Payments then due, and (ii) Loan was subject to an Interest Capitalisation unless such Loan has been current for 12 consecutive months up to the relevant Monthly Test date, and (B) is the aggregate Current Balance of the Loans comprising the Portfolio at that date;

(c) as at the relevant Monthly Test Date, the General Reserve Fund is at the General Reserve Fund Required Amount;

(d) the Cash Manager is not aware that the then current ratings of the Notes then outstanding would be downgraded, withdrawn or qualified as a result of the relevant Product Switch remaining in or forming part of the Portfolio;

(e) each Loan and its Related Security which is the subject of a Product Switch complies at the date of such Product Switch with the Loan Warranties;

(f) the yield on the Product Switch is greater than 2.50 per cent. per annum and subject to all applicable laws, rules and guidelines relating to the Mortgages and to EBS and Haven;

(g) the Principal Deficiency Ledger does not have a debit balance as at the immediately preceding Interest Payments Date after applying all Available Revenue Receipts on that Interest Payments Date;

(h) the Current Balance of Buy-to-Let Loans divided by the Current Balance of the Loans in the Portfolio (considering such Product Switch) is not more than 1% above the Current Balance of Buy-to-Let Loans divided by the Current Balance of the Loans in the Portfolio as of the Closing Date;

(i) the Current Balance of loans with an interest-only part divided by the Current Balance of the Loans in the Portfolio (considering such Product Switch) is not more than 3% above the Current Balance of loans with an interest-only part divided by the Current Balance of the Loans in the Portfolio as of the Closing Date.